

ENABLING OPERATORS TO SENSE, SEE AND KNOW MORE

maxAI™ 130 CAN Bus Display



The status and health of vehicles and equipment is vital, regardless of the application size. So maximatecc developed the maxAI 130, a simple, configurable display to help value-conscious equipment managers and operators monitor multiple engine parameters, even in the most limited spaces.

Complimentary to our full CAN Bus and DDBI portfolio, the maxAI 130 is small but mighty. With a compact 52mm housing, it offers a robust 12 screens and configuration tool for full customization. The enhanced graphic display makes it easy to set up your ideal functions, including maintenance, operating hours and engine parameters.

maximatecc



maxAI 130: COMPACT DESIGN, SUPERIOR USER EXPERIENCE

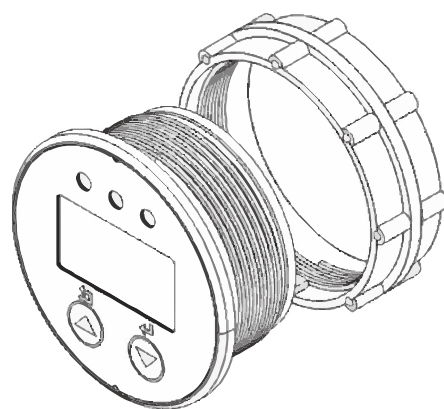
maximatecc is continually focused on innovative ways to communicate critical vehicle data using the most comprehensive designs. As electrification increases in many markets and OEMs adopt battery management systems, you'll find the maxAI 130 offers ideal flexibility with four configurable inputs, allowing you to plug in multiple sensors and senders. The micro controller ensures access to engine performance data in seconds.

Two available models:

- **maxAI 130: one parameter displayed at a time, cycle screens via external button**
- **maxAI 130b: one parameter displayed at a time, cycle 12 screens via display keypad**

Both models include these display features:

- **Monochrome 1.36-inch FSTN screen with 106 x 56 resolution**
- **Screen setup via configurable application software**
- **Three LED warning indicators with black dead-front**
- **Two available protocols:**
 - J1939 for engine applications
 - CAN open for electrified applications
- **250 or 500 Kbps baud rate available**
- **Boots up in less than 3 seconds**
- **IP67 rating (front) and IP64 (rear)**



maxAI CAN BUS DISPLAY SERIES

The maxAI CAN Bus Displays offer a range of customizable solutions to maximize your gauge and display experience. Built for rugged wear and tear, the maxAI will get you the information you need when you need it.



maxAI 280



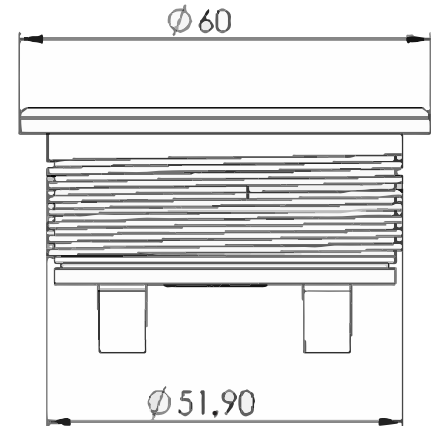
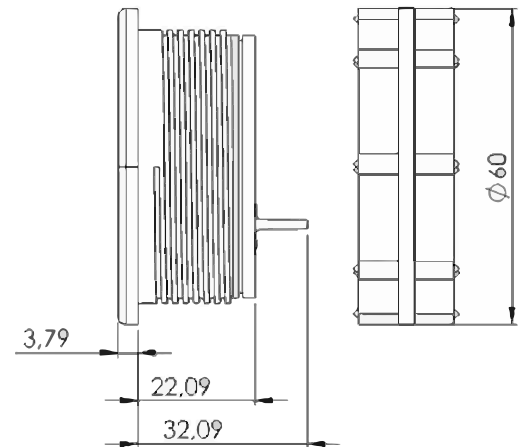
maxAI 430 & 430V



maxAI 430i & 430iV

maxAI 130 PRODUCT SPECIFICATIONS

Processing	
Main Processor	Micro-controller based on ARM® Cortex®-M0 32-bit
Storage	Flash memory 200 KB, for operating system and applications
RAM	Micro-controller internal RAM 16 KB
Display	
Type	FSTN
Size & Resolution	1.36" diagonal, 106X56 pixels
Color Depth	1-bit monochrome
Interfaces	
Keypad	maxAI 130b only: 2-button keypad, can be used to navigate up to 12 screens or select menu items
Connectors	8 pin TE Mini-Universal MATE-N-LOK
CAN	1 CAN, J1939 or CAN open protocol, 250 or 500 kbps baud rate available
Input	4 configurable inputs for resistive or voltage output senders, or digital inputs
Power Supply	12 or 24 volt nominal systems
Warning Lights	3 dead-fronted LED status indicators
Electrical Protection	Reverse polarity, transients include load dump, over-voltage and ESD
Software	
Programmable	Programmed in C language
Application Software	maxAI™ Configurator
Environment	
IP Class	IP67 (front) IP64 (rear)
EMS Conformity	ISO 13766 (radiated emissions) SAE J1113-21 (radiated immunity)
SAE Standard	Vibration, UV, salt spray and chemical compatibility
Temp. Range	-30 to 70°C (operational) -30 to 80°C (storage)
Casing	
Housing Material	Black PC/ABS plastic, UV resistant
Cover Lens	Polycarbonate with anti-scratch coating and anti-fog treatment
Mech. Installation	Flush/Panel mounting
W x H x D (in/mm)	2.35/60 x 2.35/60 x 1.02/25.88
Weight (oz/g)	Without keypad, 130: 1.6oz/46g With keypad, 130b: 1.7oz/48g

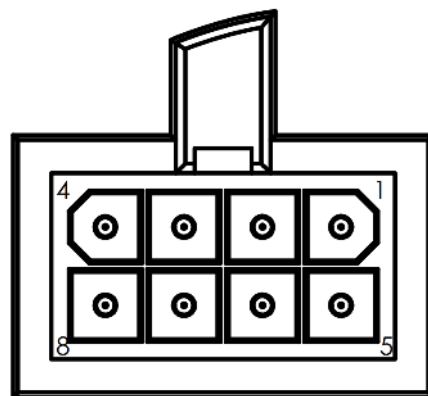


THE DIFFERENCE IS IN THE DETAILS

Put the maxAI 130 engine or battery monitoring display to work for you. Contact us today at info@maximatecc.com.

Connector pinout

#PIN	TYPE	STATE
J1.1	Config. input	Voltage/Digital/Resistance
J1.2	Power	Battery+
J1.3	Power	Ground
J1.4	Config. input	Voltage/Digital/Resistance
J1.5	Config. input	Voltage/Digital/Resistance
J1.6	CAN	CAN High
J1.7	CAN	CAN Low
J1.8	Config. input	Voltage/Digital/Resistance



maximatecc specializes in operator-machine interface solutions for critical environments. We support industrial machinery OEMs and partners globally with a broad portfolio of products and services. Through technology, engineering expertise and operational excellence, we make machines smart, safe and productive.

NORTH AND LATIN AMERICA

maximatecc.com

N19 W24200 Riverwood Dr., Suite 300
Waukesha, WI 53188
800-676-1837

EUROPE/MIDDLE EAST/AFRICA (EMEA)

AST

Progrés 32, 08191 Rubi
Barcelona, Spain
+34-93-586-2073

BRAZIL

Tuotest Medidores Ltda

Avenida Luiz Merenda, 489 - Campanário
Diadema-SP - CEP: 09931-390
Brazil
+55-11-4092-7200

maximatecc.

Enabling operators to sense, see and know more

©2023 maximatecc. All rights reserved.  